



Pall Corporation is a filtration, separation and purification leader providing solutions to meet the critical fluid management needs of customers across the broad spectrum of industry. Pall works with customers to advance health, safety and environmentally responsible technologies. The Company's engineered products enable process and product innovation and minimize emissions and waste.



# Pall<sup>®</sup> High Efficiency Offline Filtration System

Proven. Assured Peace of Mind

Are you really concerned about your oil cleanliness?

*Filtration. Separation. Solution.*

## CONTACT US

**Pall India Pvt. Ltd.**  
Survery No. 237 IT Park Phase 1 Hinjewadi Pune - 411057 India  
☎ +91 20 6675 1301 | +91 20 6675 1366  
[www.pall.com](http://www.pall.com)

/pallcorporation /pallcorporation /pallcorporation

**Pall® - High Efficiency Offline Filtration System**  
Proven. Assured Peace of Mind

**Are you really concerned about your oil cleanliness?**

Leveraging more than 30 years of design and field experience, Pall presents the The High Efficiency Offline Filtration system; Its is a portable off-line filter unit designed to reduce or eliminate the presence of particulate contamination in hydraulic and lubrication systems.

Versatile, Reliable, Proven, Rugged & Cost effective filtration system developed to overcome the challenges of cleanliness & regeneration of hydraulic & lubrication oil with highly efficient filtration media



**Focus on your process, Not on your offline filtration system**

These Offline Filtration system requires minimum of user interaction, which allows users to focus more on their process and less on the maintenance and upkeep.

The Pall® - High Efficiency Offline Filtration system is a complete system with built-in pump, motor, filter with all other required accessories. It can be connected to any of the hydraulic /lube system reservoir as an offline unit , Simply connect to the reservoir, power up, and press the start button. In fact, many users are able to just “press the button and walk away”.



**APPLICATIONS**

Power Plants Main lube oil tank, Turbine Governing, Hydraulic Powerpack of Wagon Tippler/Stacker Reclaimer/SAC and feeders, Auto LOH for Stamping, Heavy Lubrication, Material Handling, Heavy Fuel, Heavy Hydraulic, Heavy Lubrication, Medium & Light Fuel, Medium & Light Hydraulic, Medium & Light Lubrication, Bearing Lubrication, Drives Gear Box + Roll Housing, Forging / Extrusion, Gear Box / Bearing, Gear Box / Mergoil, Material Directional Control, Mining Equipment Hydraulic Fluid, Mining Equipment Lube Oil - on & off board, Pulp&Paper LOH, Pulp&Paper Machine Process.

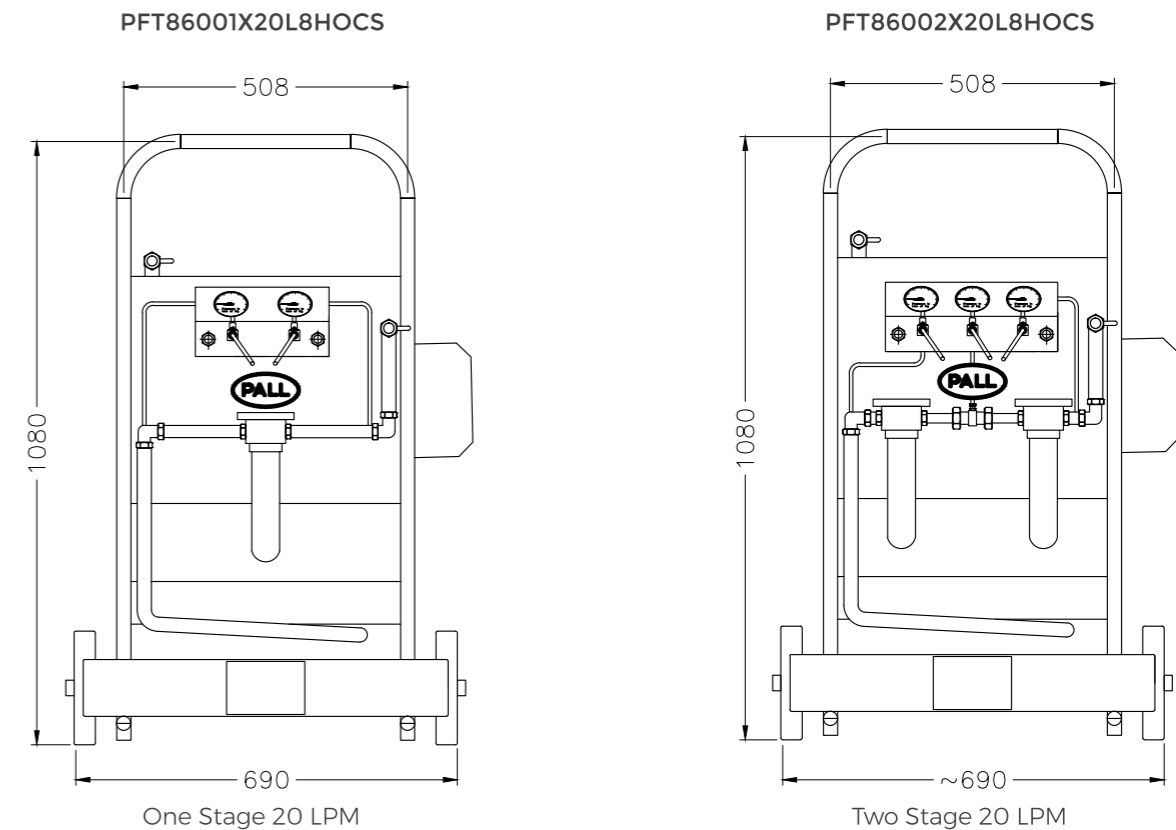
**SEGMENTS**

- Power Plants
- Primary Metals
- Automotive
- General Industrial
- Industrial & Mobile OEM
- Mining
- Pulp & Paper

**THE SALIENT FEATURES**

- Affordable 'Plug & Play' Rugged System
- Ease of Engagement - Operates in offline mode
- Patented Pall Depth Filter for consistent performance
- High Service life with low consumable cost
- Wide range of Microns Rating - Both Nominal/ Absolute
- Improve NAS / ISO
- Versatile System
- Auto and Manual operation

**20 LPM 8600- OFF LINE FILTRATION TROLLEY SYSTEM**

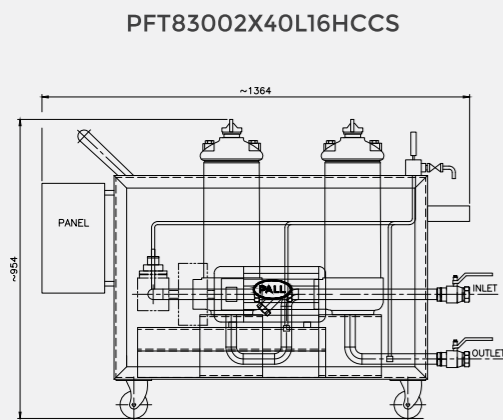


**SPECIFICATIONS**

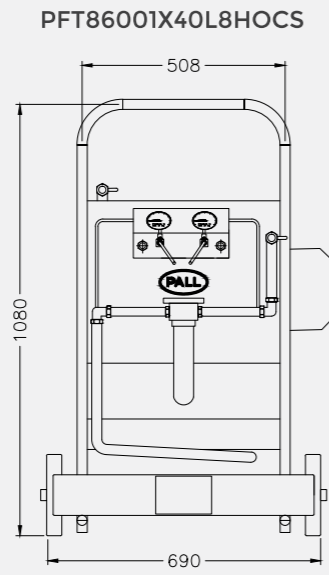
- Fluid/Service:** General Hydraulic Oil / Lube Oil
- Operating Temperature:** 10 - 70 degree C
- Max Pressure:** 5 bar (g)
- Fluid Viscosity:** 40 to 80 CST
- Flow Rate:** 20 LPM
- Power Supply:** 415V AC Three Phase
- Supply Voltage Tolerance:** +- 10%
- Motor Rating:** 0.75 KW
- On/Off Control Station:** Manual Operation

**40 LPM - OFF LINE FILTRATION TROLLEY SYSTEM**

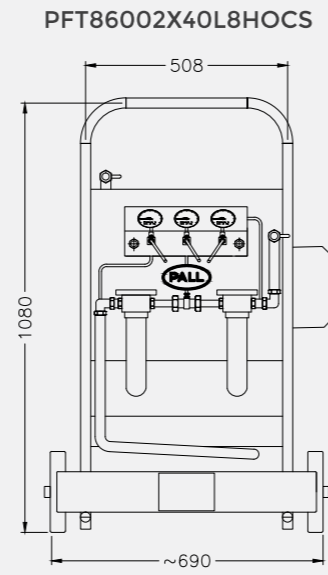
**SCHEMATICS**



8300 - Two Stage 40 LPM



8600 - One Stage 40 LPM



8600 - Two Stage 40 LPM



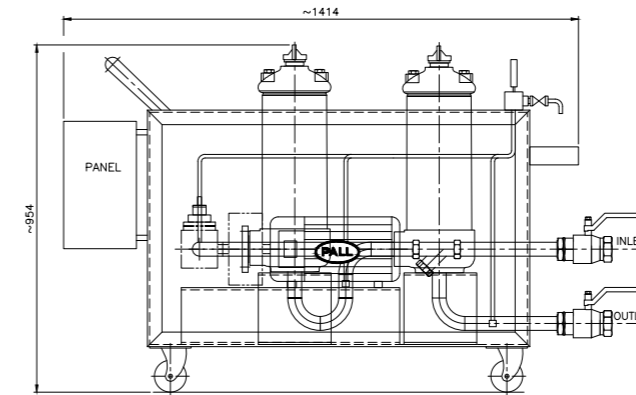
**SPECIFICATIONS**

**Fluid/Service:** General Hydraulic Oil / Lube Oil  
**Operating Temperature:** 10 - 70 degree C  
**Max Pressure:** 5 bar (g)  
**Fluid Viscosity:** 40 to 80 CST  
**Flow Rate:** 40 LPM

**Power Supply:** 415V AC Three Phase  
**Supply Voltage Tolerance:** +- 10%  
**Motor Rating:** 0.75 KW  
**On/Off Control Station:** Auto / Manual Operation

**55/100 LPM OFF-LINE FILTRATION TROLLEY SYSTEM**

PFT83002X55L16HCCS



55 LPM - Two Stage

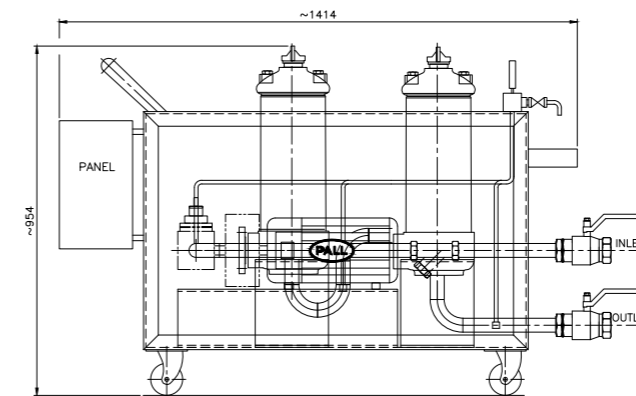


**SPECIFICATIONS**

**Fluid/Service:** General Hydraulic Oil / Lube Oil  
**Operating Temperature:** 10 - 70 degree C  
**Max Pressure:** 5 bar (g)  
**Fluid Viscosity:** 40 to 120 CST  
**Flow Rate:** 55 LPM

**Power Supply:** 415V AC Three Phase  
**Supply Voltage Tolerance:** +- 10%  
**Motor Rating:** 1.1 KW  
**On/Off Control Station:** Auto & Manual Operation

PFT83002X100L16HCS



100 LPM - Two Stage

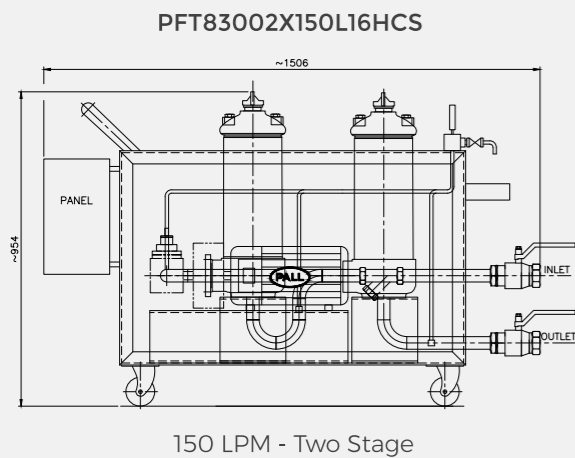


**SPECIFICATIONS**

**Fluid/Service:** General Hydraulic Oil / Lube Oil  
**Operating Temperature:** 10 - 70 degree C  
**Max Pressure:** 5 bar (g)  
**Fluid Viscosity:** 40 to 280 CST  
**Flow Rate:** 100 LPM

**Power Supply:** 415V AC Three Phase  
**Supply Voltage Tolerance:** +- 10%  
**Motor Rating:** 2.2 KW  
**On/Off Control Station:** Auto & Manual Operation

### 150/ 200 LPM OFF-LINE FILTRATION TROLLEY SYSTEM

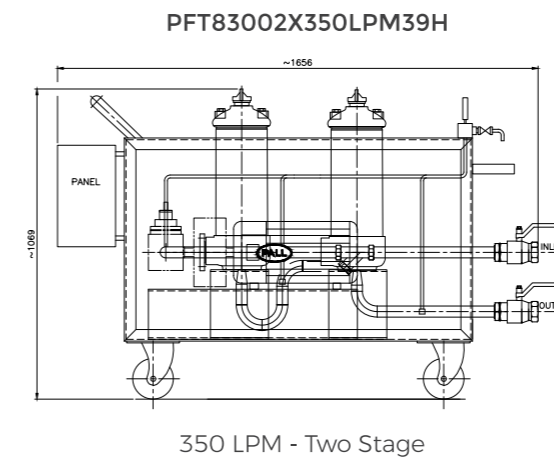


#### SPECIFICATIONS

**Fluid/Service:** General Hydraulic Oil / Lube Oil  
**Operating Temperature:** 10 - 70 degree C  
**Max Pressure:** 5 bar (g)  
**Fluid Viscosity:** 40 to 280 CST  
**Flow Rate:** 150 LPM

**Power Supply:** 415V AC Three Phase  
**Supply Voltage Tolerance:** +- 10%  
**Motor Rating:** 3.7 KW  
**On/Off Control Station:** Auto & Manual Operation

### 350/ 450 LPM OFF-LINE FILTRATION TROLLEY SYSTEM

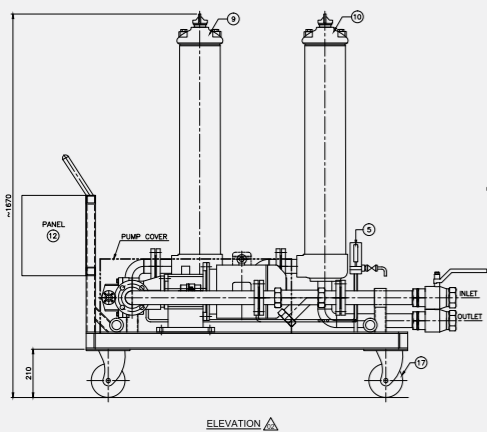


#### SPECIFICATIONS

**Fluid/Service:** General Hydraulic Oil / Lube Oil  
**Operating Temperature:** 10 - 70 degree C  
**Max Pressure:** 6 BAR (g)  
**Fluid Viscosity:** 40 to 320 CST  
**Flow Rate:** 350 LPM

**Power Supply:** 415V AC Three Phase  
**Supply Voltage Tolerance:** +- 10%  
**Motor Rating:** 7.5 KW  
**On/Off Control Station:** Auto & Manual Operation

PFT83002X200L39HCS

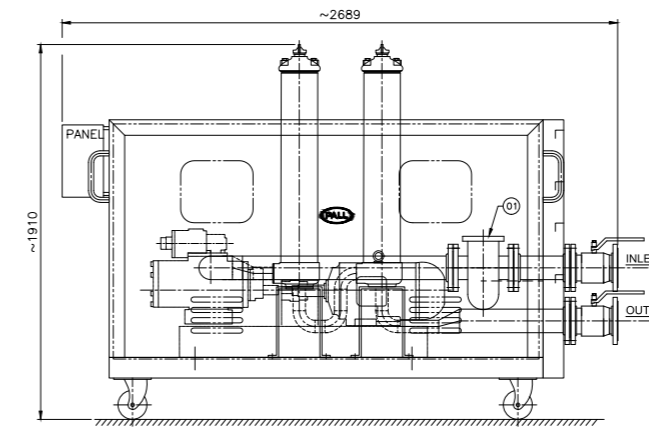


#### SPECIFICATIONS

**Fluid/Service:** General Hydraulic Oil / Lube Oil  
**Operating Temperature:** 10 - 70 degree C  
**Max Pressure:** 5 bar (g)  
**Fluid Viscosity:** 40 to 280 CST  
**Flow Rate:** 200 LPM

**Power Supply:** 415V AC Three Phase  
**Supply Voltage Tolerance:** +- 10%  
**Motor Rating:** 3.7 KW  
**On/Off Control Station:** Auto & Manual Operation

PFT83002X450LPM39H



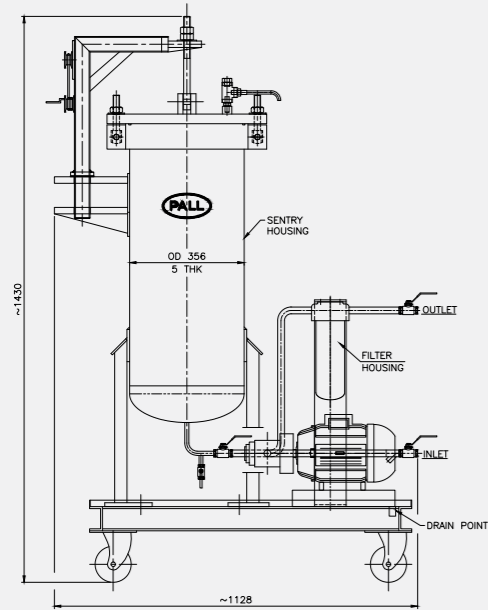
#### SPECIFICATIONS

**Fluid/Service:** General Hydraulic Oil / Lube Oil  
**Operating Temperature:** 10 - 70 degree C  
**Max Pressure:** 6 BAR (g)  
**Fluid Viscosity:** 40 to 320 CST  
**Flow Rate:** 450 LPM

**Power Supply:** 415V AC Three Phase  
**Supply Voltage Tolerance:** +- 10%  
**Motor Rating:** 9.3 KW  
**On/Off Control Station:** Auto & Manual Operation

# SENTRY SYSTEMS

XFP10U5ASZCBSPAENX



10 LPM - VESSEL SENTRY SYSTEM

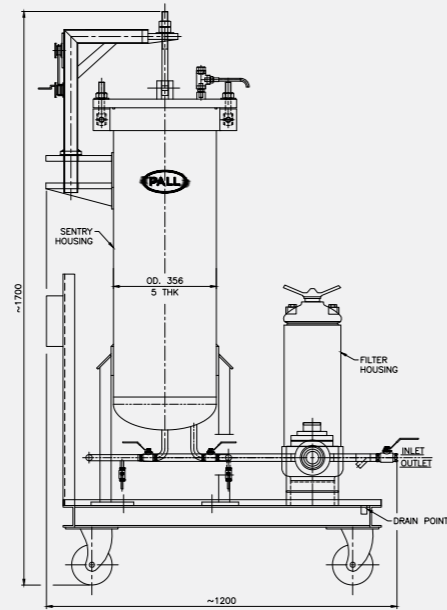


10 LPM - 1 Vessel Sentry System

## SPECIFICATIONS

**Fluid/Service:** FRF Grade Synthetic Oil  
**Operating Temperature:** 25 - 65 degree C  
**Max Pressure:** 5 bar (g)  
**Fluid Viscosity:** 46 CST  
**Flow Rate:** 10 LPM  
**Power Supply:** 415V AC Three Phase  
**Supply Voltage Tolerance:** +- 10%  
**Motor Rating:** 0.37 KW  
**On/Off Control Station:** Manual Operation

XFP20U5ASZCBSPAENX



20 LPM - VESSEL SENTRY SYSTEM

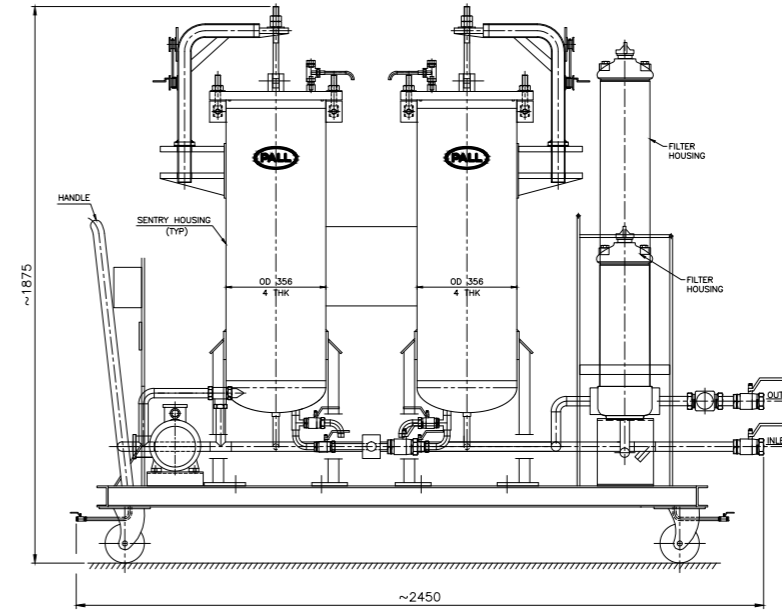


20 LPM - 2 Vessel Sentry System

## SPECIFICATIONS

**Fluid/Service:** FRF Grade Synthetic Oil  
**Operating Temperature:** 25 - 65 degree C  
**Max Pressure:** 5 bar (g)  
**Fluid Viscosity:** 46 CST  
**Flow Rate:** 20 LPM  
**Power Supply:** 415V AC Three Phase  
**Supply Voltage Tolerance:** +- 10%  
**Motor Rating:** 0.75 KW  
**On/Off Control Station:** Manual Operation

XFP40U5ASZCBSPAENX



40 LPM - VESSEL SENTRY SYSTEM



40 LPM - 4 Vessel Sentry System

## SPECIFICATIONS

**Fluid/Service:** FRF Grade Synthetic Oil  
**Operating Temperature:** 25 - 65 degree C  
**Max Pressure:** 5 bar (g)  
**Fluid Viscosity:** 46 CST  
**Flow Rate:** 40 LPM  
**Power Supply:** 415V AC Three Phase  
**Supply Voltage Tolerance:** +- 10%  
**Motor Rating:** 0.75 KW  
**On/Off Control Station:** Manual Operation

Sr No	Part Number	Viscosity	No of Filtration Stages	Flow Rate in LPM	Housing Series	Housing Length in Inches	Type of Filter O-ring	Type of Trolley Structure	Motor & Starter Rating	Electrical	Inlet & Outlet Connection	Disposables Filter Element Option
1	PFT86001X10L8HOCS	40-80 cSt	1	10	8600	8"	Nitrial	Open	0.37 kw	3Ph x 415V x 50HZ	1/2" BSP	HC9600FCZ8H
2	PFT86002X10L8HOCS	40-80 cSt	2	10	8600	8"	Nitrial	Open	0.37 kw	3Ph x 415V x 50HZ	1/2" BSP	HC9600FCP8H
3	PFT86001X20L8HOCS	40-80 cSt	1	20	8600	8"	Nitrial	Open	0.75 kw	3Ph x 415V x 50HZ	3/4" BSP	HC9600FCN8H
4	PFT86002X20L8HOCS	40-80 cSt	2	20	8600	8"	Nitrial	Open	0.75 kw	3Ph x 415V x 50HZ	3/4" BSP	HC9600FCS8H
5	PFT86001X40L8HOCS	40-80 cSt	1	40	8600	8"	Nitrial	Open	0.75 kw	3Ph x 415V x 50HZ	1" BSP	HC9600FCT8H
6	PFT86002X40L8HOCS	40-80 cSt	2	40	8600	8"	Nitrial	Open	0.75 kw	3Ph x 415V x 50HZ	1" BSP	
7	PFT83001X40L16HCCS	40-80 cSt	1	40	8300	16"	Nitrial	Closed	0.75 kw	3Ph x 415V x 50HZ	1" BSP	
8	PFT83002X40L16HCCS	40-80 cSt	2	40	8300	16"	Nitrial	Closed	0.75 kw	3Ph x 415V x 50HZ	1" BSP	
9	PFT83001X55L16HCCS	40-120 cSt	1	55	8300	16"	Nitrial	Closed	1.1 kw	3Ph x 415V x 50HZ	1" BSP	HC8300FCZ16H
10	PFT83002X55L16HCCS	40-120 cSt	2	55	8300	16"	Nitrial	Closed	1.1 kw	3Ph x 415V x 50HZ	1" BSP	HC8300FCP16H
11	PFT83001X100L16HCS	40-280 cSt	1	100	8300	16"	Nitrial	Closed	2.2 kw	3Ph x 415V x 50HZ	1 1/2" BSP	HC8300FCN16H
12	PFT83002X100L16HCS	40-280 cSt	2	100	8300	16"	Nitrial	Closed	2.2 kw	3Ph x 415V x 50HZ	1 1/2" BSP	HC8300FCS16H
13	PFT83001X150L16HCS	40-280 cSt	1	150	8300	16"	Nitrial	Closed	3.7 kw	3Ph x 415V x 50HZ	2" BSP	
14	PFT83002X150L16HCS	40-280 cSt	2	150	8300	16"	Nitrial	Closed	3.7 kw	3Ph x 415V x 50HZ	2" BSP	
15	PFT83001X200L39HOS	40-280 cSt	1	200	8300	39"	Nitrial	Open	3.7 kw	3Ph x 415V x 50HZ	2" BSP	HC8300FCZ39H
16	PFT83002X200L39HOS	40-280 cSt	2	200	8300	39"	Nitrial	Open	3.7 kw	3Ph x 415V x 50HZ	2" BSP	HC8300FCP39H
17	PFT83002X350LPM39H	40-320 cSt	2	350	8300	39"	Nitrial	Closed	7.5 kw	3Ph x 415V x 50HZ	3" BSP	HC8300FCN39H
18	PFT83002X350LPM39H	40-320 cSt	2	450	8300	39"	Nitrial	Closed	11 kw	3Ph x 415V x 50HZ	4" BSP	HC8200FCT39H

## TESTING FACILITY



### Effects of using Highly Efficient Filters

